

# 36 kW COMPACT MICROWAVE GENERATOR AT 915 MHz FOR CVD



SAIREM's **GLP360KSM Compact for CVD** provides continuous wave (CW) output power adjustable **from 5 to 36 kW**.

The GLP is a continuous wave microwave generator composed of a single cabinet with switch mode power supplies and a magnetron. For a better efficiency, a PLC controller drives simultaneously the magnetron anodic power, electromagnet field and filament current.

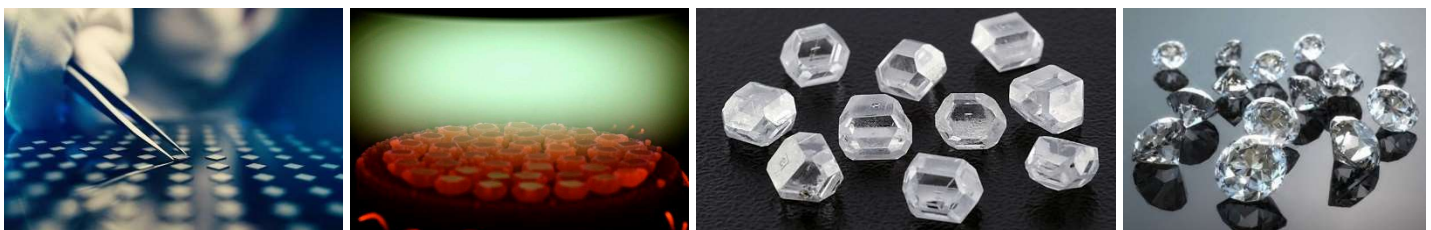
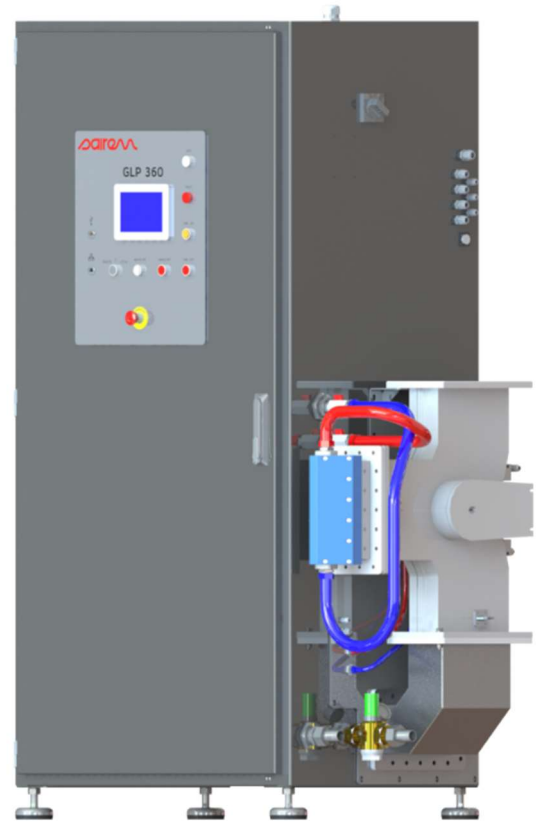
It results to a very low power setting possibility (5 kW by default), maximum efficiency, reduced ripple and increased magnetron life time.

This equipment has been specially developed **to support weeks long running cycle** and deliver a narrow spectrum, necessary to offer the purest diamonds.

**Multiple features**, like the **Automatic Restart Function (ARF)**, and **Preventive Alarm Management (PAM)**, alarms without stopping the production) are implemented to allow you to go to the end of your production batch, **even in case of micro power-cuts**.

SAIREM's **optimized power supply** and magnetron performances helps you to reduce process interruption and costly yield losses.

Finally, SAIREM's comprehensive customer service helps you to **maximize your production yield**, through support and advices.



# 36 kW COMPACT MICROWAVE GENERATOR AT 915 MHz FOR CVD



## MAIN APPLICATIONS

### INDUSTRIAL APPLICATIONS

- Industrial heating: liquids, essential oils, wood, rubbers, thermoplastics, biomass ...
- Industrial drying: ceramics, powders ...

### PLASMA APPLICATIONS

- Lab-grown mono and polycrystalline diamonds
- Various plasma generation applications: PECVD, gasification, gas abatement ...

## KEY BENEFITS

### COMPACT AND STURDY DESIGN

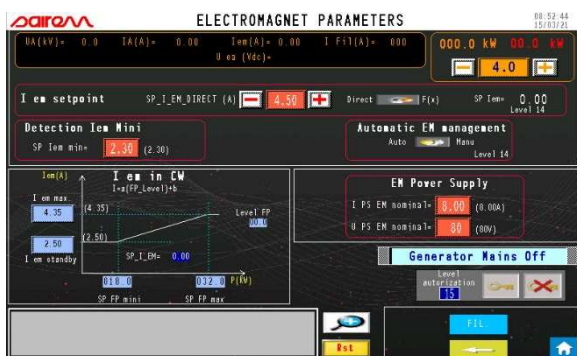
- All-in-one design: controls, power supply, microwave generator, isolator, in the same cabinet
- Painted steel cabinet (RAL9007 color)

### HIGH RELIABILITY

- **Switch mode** allows to get a very precise control of the power
- **Automatic Restart Function (ARF)**, in less than 5 ms, to avoid production stop or loss<sup>1</sup>
- **Smart controls** that allow maximum efficiency and extended magnetron lifetime
- **IP54** protection for installation in dusty, wet and warm environments.
- **Stable** power output, even at low power
- Designed for long processes
- **Precise** frequency spectrum
- Low ripple
- **Extended** magnetron lifetime

### CONTROLS

- All operational parameters and faults are available on the color touch screen



<sup>1</sup> ARF after Magnetron default: arcing, voltage issue ...

To get the complete data sheet :

- full specifications
- technical drawings

**CONTACT US !**

