

915 MHz MICROWAVE GENERATOR

MAXIMUM OUTPUT POWER 54 OR 72 OR 100 kW

SAIREM's GLP range of microwave generators provide continuous wave (CW) output power adjustable from 5 to 54 kW or 5 to 72 kW or 5 to 100 kW.

High reliability for your applications:

- **Stable** power output, even at low power
- Designed for long processes
- **Precise** frequency spectrum
- Low ripple
- Automatic Restart Function (ARF)
- **Air tight** design
- Extended magnetron lifetime

The GLP is a continuous wave microwave generator composed of a single cabinet with a switch mode power supplies and a magnetron. For a better efficiency, a PLC controller drives simultaneously the magnetron anodic power, electromagnet field and filament current.

The result is a very low power setting possibility (5 kW, lower setting power optional), maximum efficiency, reduced ripple and increased magnetron life time.

Full water cooling (no air cooling) to function in **dusty, wet, and warm environment. Can be installed in closed space.**



MAIN APPLICATIONS

INDUSTRIAL APPLICATIONS

- Industrial heating: liquids, essential oils, wood, rubbers, thermoplastics, biomass ...
- Industrial drying: ceramics, powders ...

PLASMA APPLICATIONS

- Lab-grown mono and polycrystalline diamonds
- Various plasma generation applications: PECVD, gasification, gas abatement ...

915 MHz MICROWAVE GENERATOR

MAXIMUM OUTPUT POWER 54 OR 72 OR 100 kW

KEY BENEFITS

COMPACT DESIGN

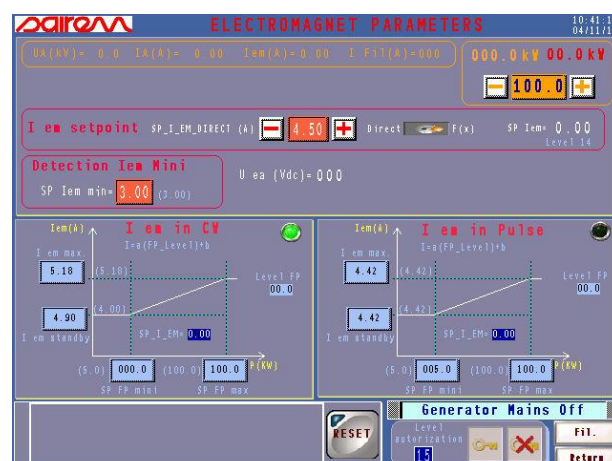
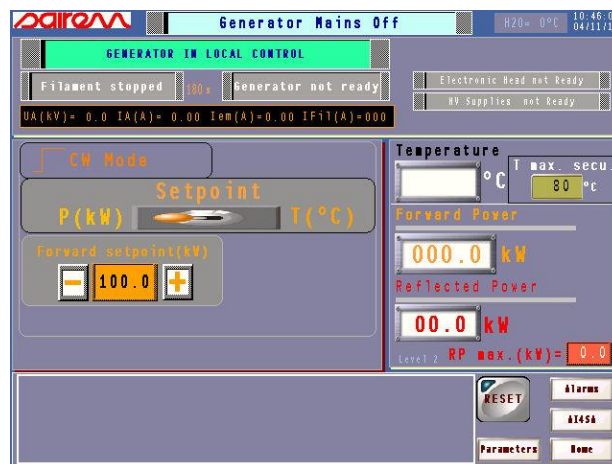
- All-in-one design: controls, power supply, microwave generator, isolator, in the same cabinet
- Stainless steel 304L, air-tight construction

HIGH RELIABILITY

- Switch mode allows to get a very precise control of the power
- Automatic Restart Function (ARF), in less than 100 ms, to avoid production stop or loss
- Smart controls that allow maximum efficiency and extended magnetron lifetime
- IP54 protection for installation in wet environment

CONTROLS

- All operational parameters and faults are available on the color touch screen



1 ARF for Magnetron default: arcing, voltage issue ...

To get the complete data sheet :

- full specifications
- technical drawings

CONTACT US !

